

SWALLOW

GREEN



Duo Home

A striking two bedroom home

The Duo home has been cleverly designed to make the most of the space, offering two equal sized double bedrooms and a separate shower room along with a generous kitchen/living area, with French doors leading out onto your own garden area. You will feel right at home in this contemporary house with modern features to suit your lifestyle.

SQUARE

ONE

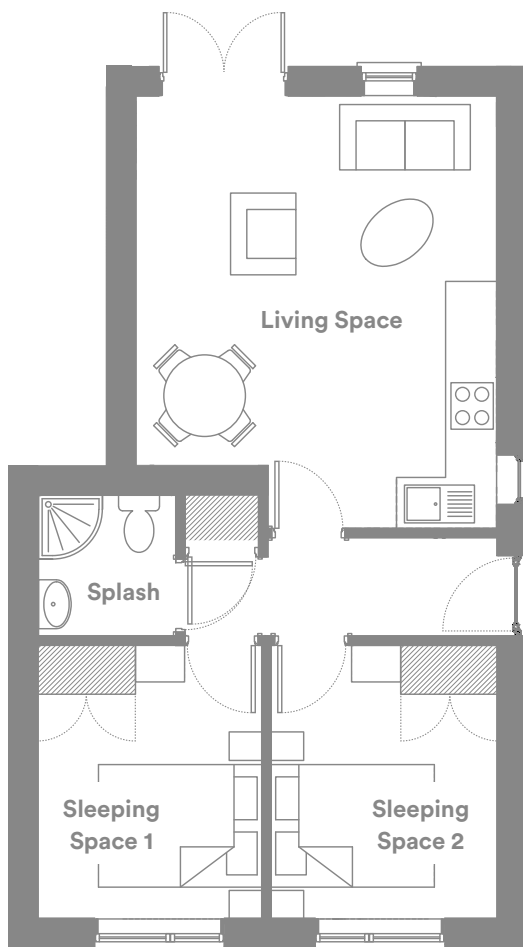


The natural choice for First-Time Buyers

squareonehomes.co.uk



Backed by
HM Government

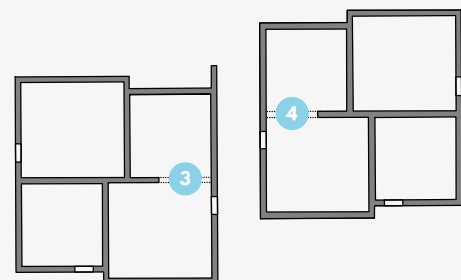
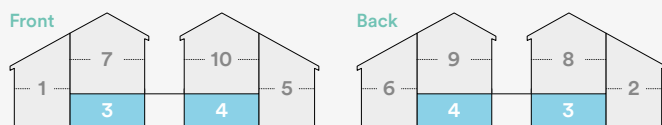


The unique Square One Homes concept means you can live in a high quality new home, in a desirable location that you can afford, even if you thought buying your own home was out of reach.

Every property has been designed and built to the highest standards with a focus on a contemporary look and feel, with innovative energy-saving features to help reduce your running costs. Enjoy the freedom of your own space, in your own home, behind your own front door with a Square One Home. Each and every home also has the added benefit of its own off-street parking space.

- Sleeping Space One** 2.90m x 2.87m
- Sleeping Space Two** 2.90m x 2.69m
- Living Space** 4.55m x 5.64m
- Splash** 1.57m x 1.65m

Home Location



These particulars are for guidance only. They do not, in any way, form part of a warranty or guarantee. Square One Homes reserves the right to change or alter specifications at any time without notice. Artist's impressions are for a typical development by Square One Homes and are provided for illustrative purposes only. The materials and external appearance may vary between each development by Square One Homes. The brochure should therefore be used only as a guide. The floor plans in this brochure show approximate maximum dimensions for each room. These details are correct as of May 2019.

Contact Gascoigne Halman Altrincham
T: 0161 929 1500
E: altrincham@gascoignealman.co.uk