

SWALLOW

GREEN



Uno Plus Home

A beautifully modern one bedroom home

An open plan kitchen/living area makes up the first floor of this stylish property with French doors and a Juliette balcony, you will be proud to call this your home. A generous bedroom and separate shower room complete the homely feel of this modern home.

SQUARE

ONE



The natural choice for First-Time Buyers

squareonehomes.co.uk



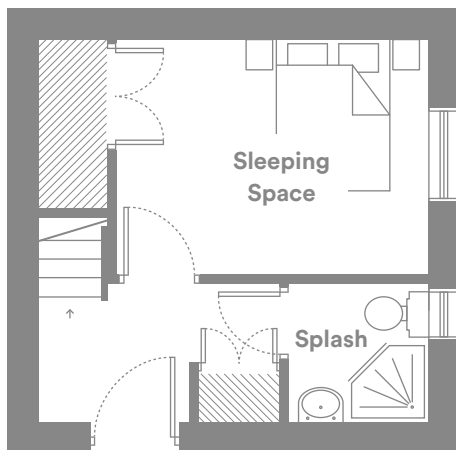
Backed by
HM Government



The unique Square One Homes concept means you can live in a high quality new home, in a desirable location that you can afford, even if you thought buying your own home was out of reach.

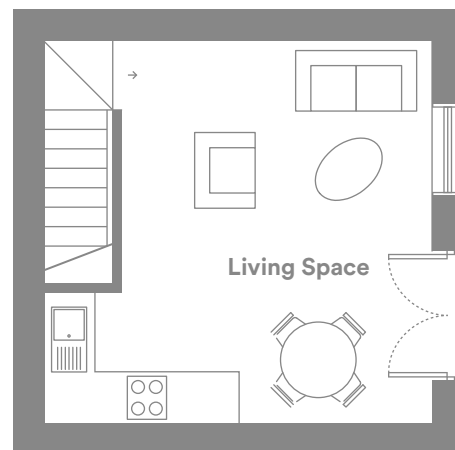
Every property has been designed and built to the highest standards with a focus on a contemporary look and feel, with innovative energy-saving features to help reduce your running costs. Enjoy the freedom of your own space, in your own home, behind your own front door with a Square One Home. Each and every home also has the added benefit of its own off-street parking space.

Ground Floor



Sleeping Space 3.57m x 2.72m
Splash 1.64m x 1.57m

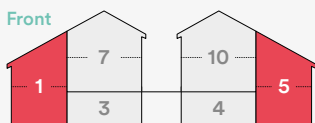
First Floor



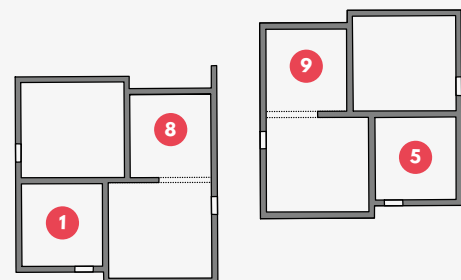
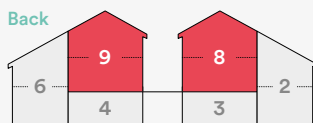
Living Space 4.44m x 4.37m

Home Location

Front



Back



These particulars are for guidance only. They do not, in any way, form part of a warranty or guarantee. Square One Homes reserves the right to change or alter specifications at any time without notice. Artist's impressions are for a typical development by Square One Homes and are provided for illustrative purposes only. The materials and external appearance may vary between each development by Square One Homes. The brochure should therefore be used only as a guide. The floor plans in this brochure show approximate maximum dimensions for each room. These details are correct as of May 2019.

Contact Gascoigne Halman Altrincham
T: 0161 929 1500
E: altrincham@gascoignealman.co.uk